



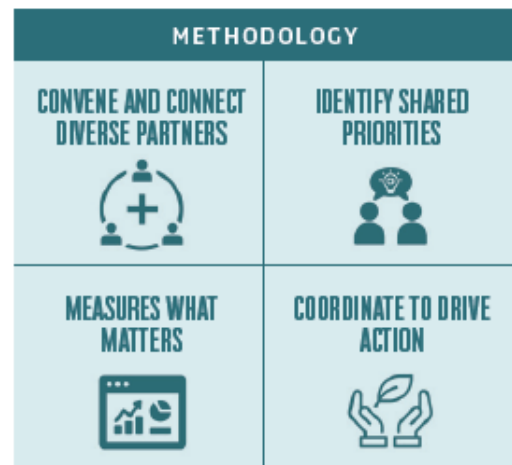
Hawai'i's Aloha+ Dashboard

The *Aloha+ Challenge* is Hawai'i's local framework to achieve the UN 2030 Sustainable Development Goals (SDGs), measured through an open-data Dashboard to provide accountability, transparency and inform action. Launched in 2014, the *Aloha+ Challenge* is jointly led by Hawai'i's Governor, all four County Mayors, State Legislature and Office of Hawaiian Affairs with statewide business and civil society partners through the [Hawai'i Green Growth Local2030 Hub](#). Grounded in Hawai'i's legacy of systems thinking, culture and indigenous wisdom, the *Aloha+ Challenge* identified local six priority areas and now tracks Hawai'i's contribution to all 17 UN SDGs through the Aloha+ Dashboard.

Inspired by Global Island Partnership commitments, including the Micronesia Challenge and Caribbean Challenge, the *Aloha+ Challenge* was announced at the 2014 UN Small Island Developing States Conference in Samoa as the US Commitment to the Samoa Pathway. Hawai'i's *Aloha+ Challenge* model has inspired action in other communities, from Guam to Tasmania, with the Global Island Partnership and [Local2030 Islands Network](#), and is recognized through the United Nations Local2030 global multi-stakeholder initiative as a local model that can support local SDG implementation.

Aloha+ Dashboard

The [Aloha+ Dashboard](#) (alohachallenge.hawaii.gov) is an open-data platform using Esri technology that tracks Hawai'i's progress on the SDGs. The Dashboard was co-developed through an initial four-year stakeholder engagement process starting in 2014 facilitated by the Hawai'i Green Growth that brought together government, business, academia, philanthropy, civil society and community partners in meetings across all four counties. Guided by measuring what matters to Hawai'i's communities, the Aloha+ Dashboard currently tracks six sustainability goals through thirty-seven targets and over two-hundred and eighty indicators based on available data. The Aloha+ Dashboard informs data-driven policy and engages communities through innovative citizen science data initiatives to inspire local action and shift behavior on the SDGs. Hawai'i's counties have further localized the Aloha+ SDGs, launching new county-level Aloha+ household dashboards to track and encourage residential action on the goals. Visit the [Kaua'i Aloha+ Challenge](#) , [Maui Aloha+ Challenge](#) , and [O'ahu Aloha+ Challenge](#) to learn more.



The Dashboard has an on-going stakeholder engagement process to update the data, identify new metrics and set priorities for action based on the trends. The Hawai'i Green Growth Local2030 Hub's methodology builds on a decade of convening and connecting partners, identifying what matters to Hawai'i's communities, measuring what matters, and coordinating policies and actions to drive progress. Through six-years of data from the Aloha+ Dashboard, the Hawai'i launched the first comprehensive statewide [Voluntary Local Review](#) on SDG progress in the United States on during the 75th UN General Assembly.